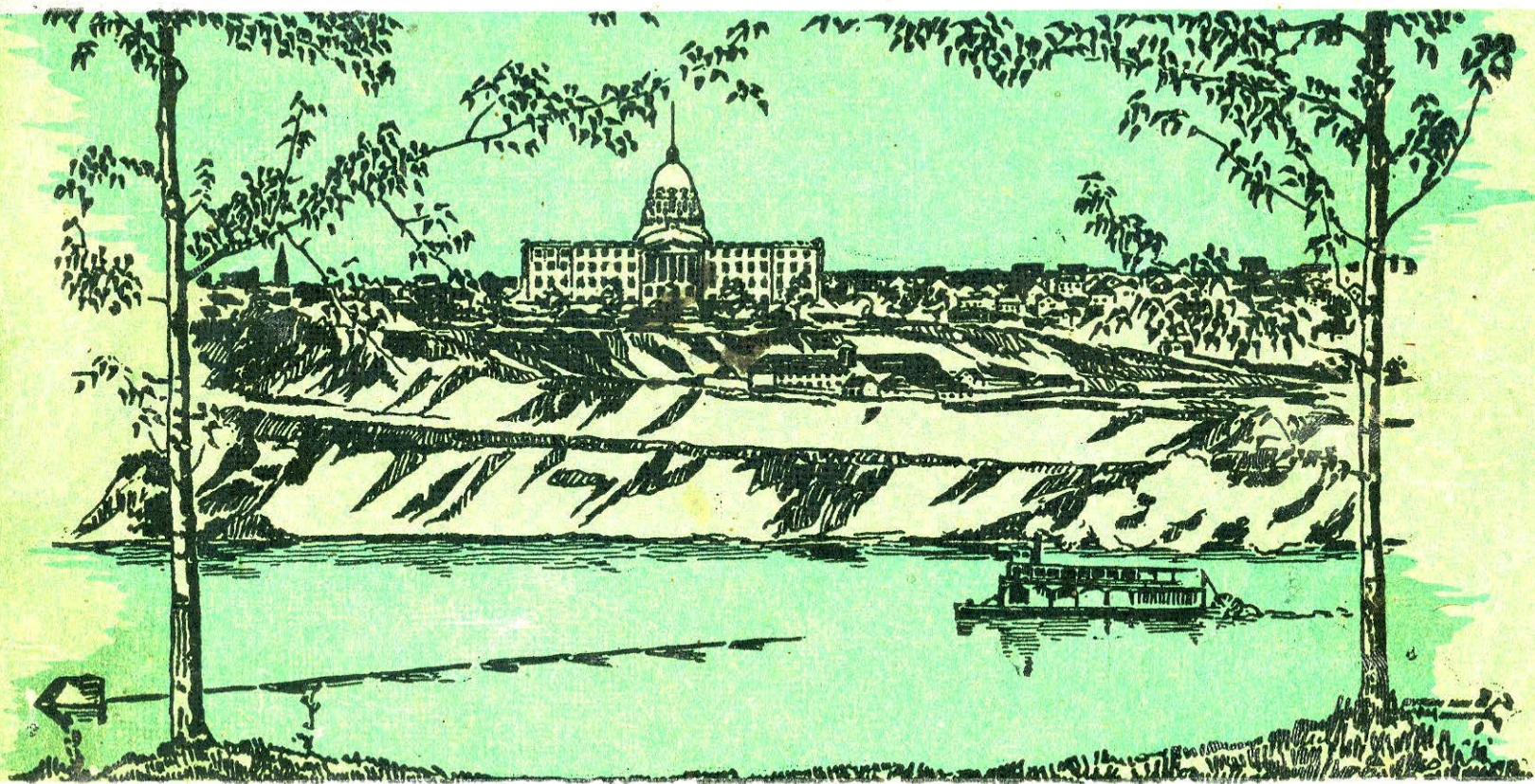


# SOUVENIR OF EDMONTON



THE CAPITAL CITY OF ALBERTA

. . Souvenir of . .

# EDMONTON

CANADA



PRINTED AND PUBLISHED BY THE DOUGLAS CO., LTD.  
AT THEIR PRESS, 212 HOWARD AVE., EDMONTON

PHOTOGRAPHS AND ENGRAVINGS BY THE  
BYRON-MAY CO., LTD.

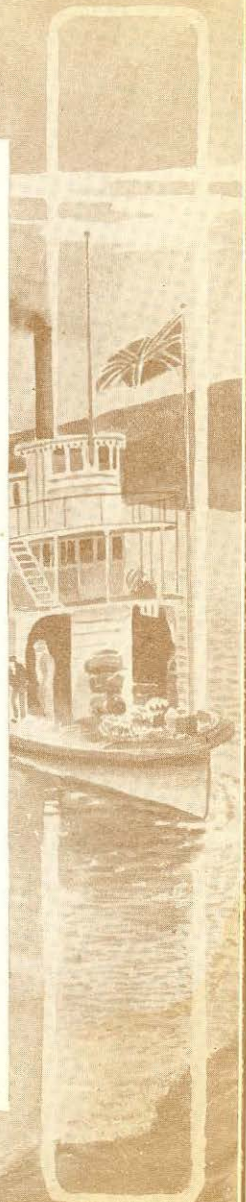


## Edmonton—The Capital City

NATURE has bestowed without measure beauty and bounty upon this Northern City of some thirty thousand inhabitants. Situated as it is on the North bank of the broad, winding Saskatchewan river, who's thickly wooded banks and fertile valleys prove a source of lasting beauty and benefit to the City's teeming thousands. Its rich minerals have for over a quarter of a century attracted the expert miner. Coal of the finest quality is found in great abundance, and much gold has been taken from the river bed. Broad acres of the most fertile farming land in America stretch for miles in every direction from the City. This, combined with the mining and manufacturing industries, makes the City the most resourceful in the Western provinces.

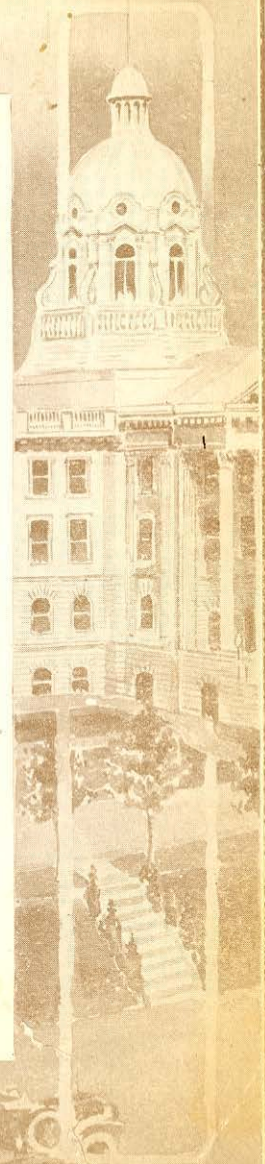
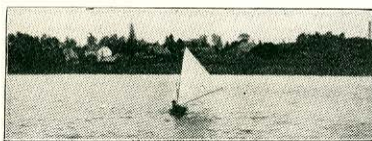
The financial status of the City may be ascertained from the fact that it has thirteen well equipped banks. Its assessment for 1910 is \$30,105,110. Its building permits for 1909 were \$2,128,166.

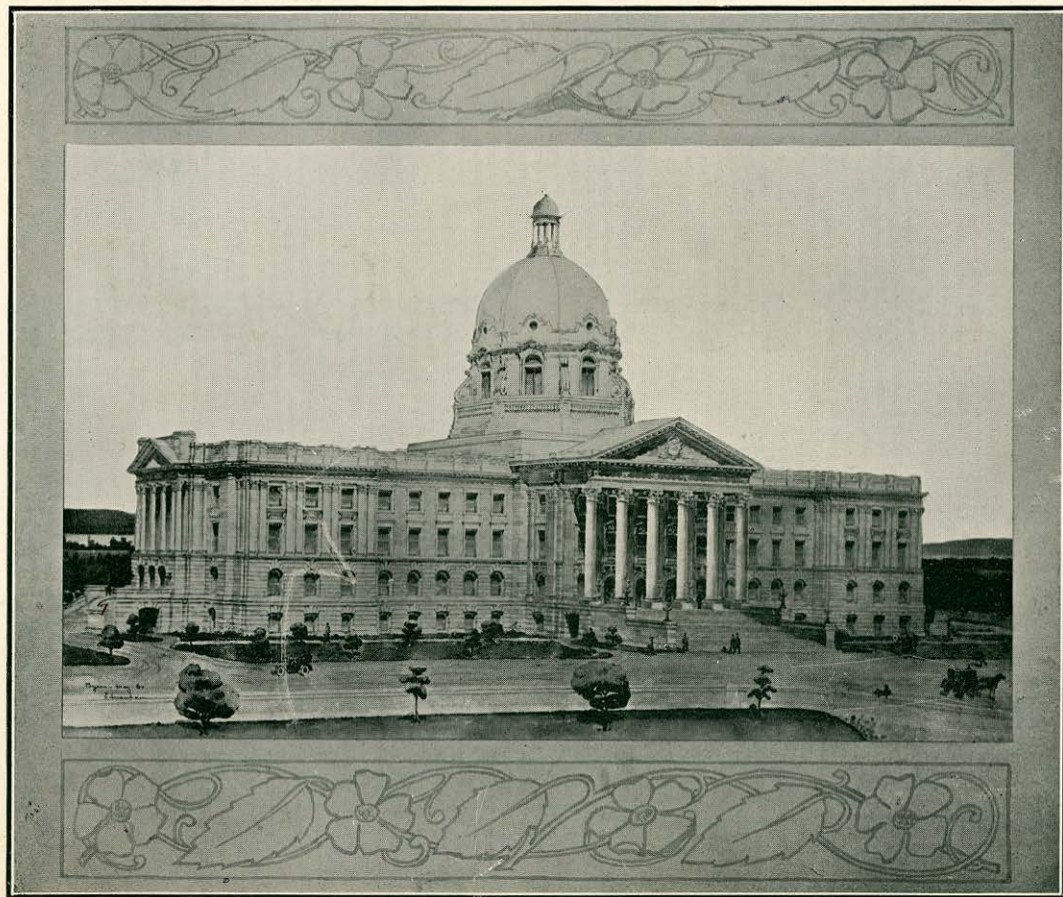
Edmonton has been well called the railway centre of Alberta, having no fewer than three transcontinental railways and as many other local lines. Not only this, but it is confidently expected that before long a railroad will be built into the famous Peace River country, which has been aptly called "The Empire of the North."



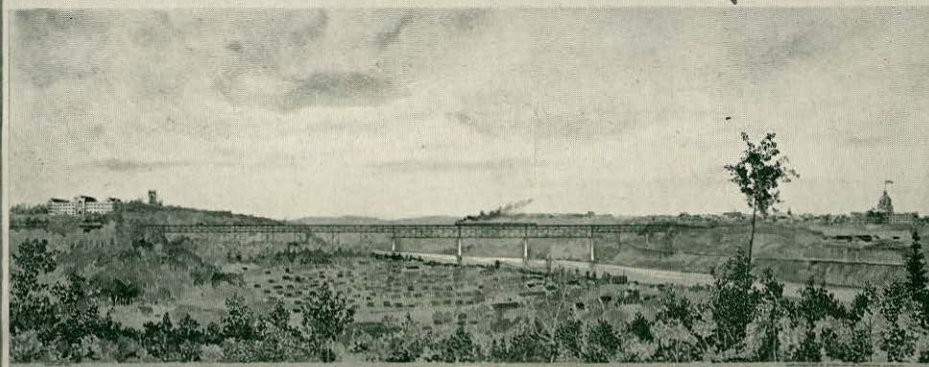
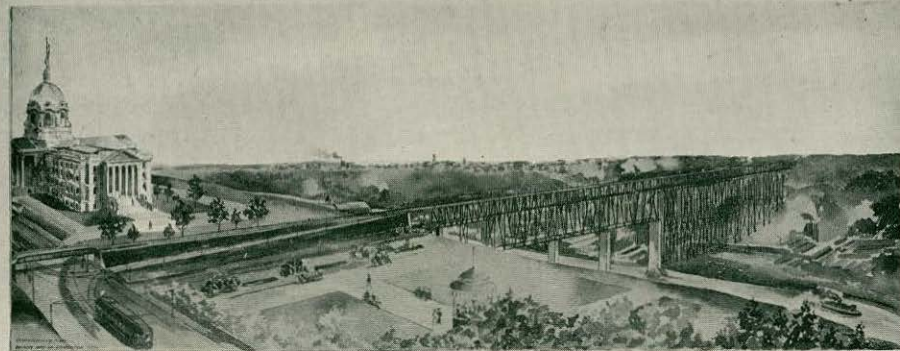
We are not surprised, therefore, to find Edmonton the commercial centre of Western Canada.

The educational interests of the City and surrounding country are amply provided for by twelve public schools and one high school, together with a number of denominational and business colleges. The Provincial University is situated only two miles from the City and connected with the City by a splendid street car service. No city, therefore, of the age and size in the whole Dominion can boast of better educational facilities. While the mercantile and educational interests are well advanced, the philanthropical and religious aspect of the City's life is not lost sight of. There are five hospitals, two sanitariums, twenty-five churches, a splendidly equipped Y.M.C.A. and Y.W.C.A., all co-operating in the physical, moral and spiritual uplift of the citizens and strangers within our gates.



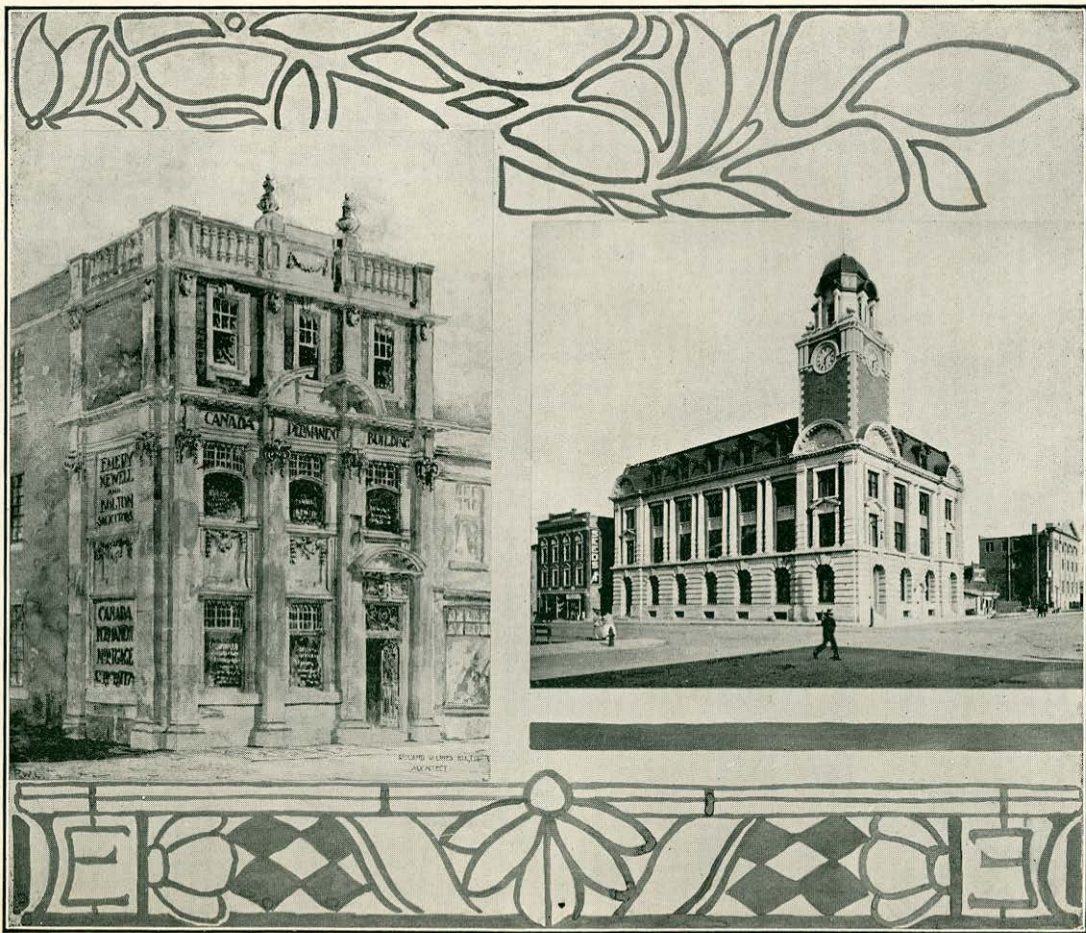


Provincial Parliament Buildings, Edmonton



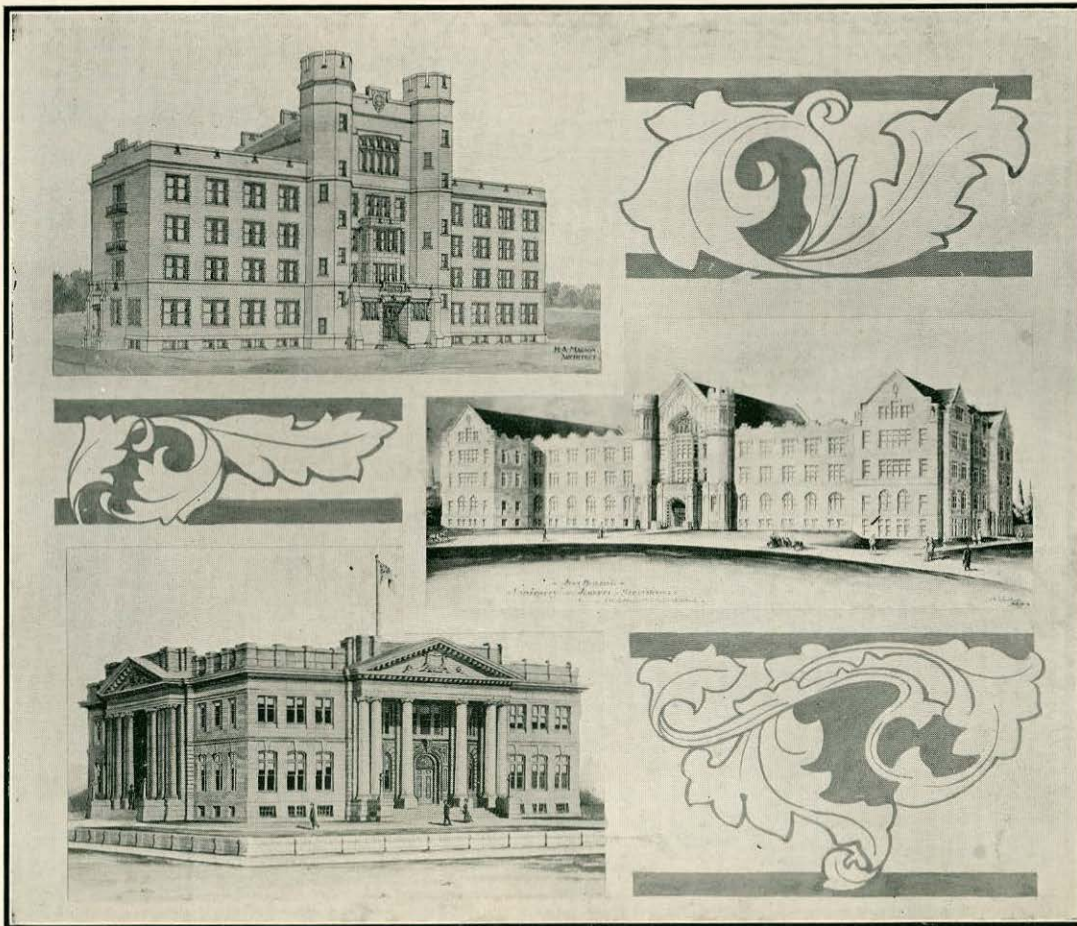
COPYRIGHTED BY BYRON MAY CO 1909 & 1910

High Level Bridge, Edmonton



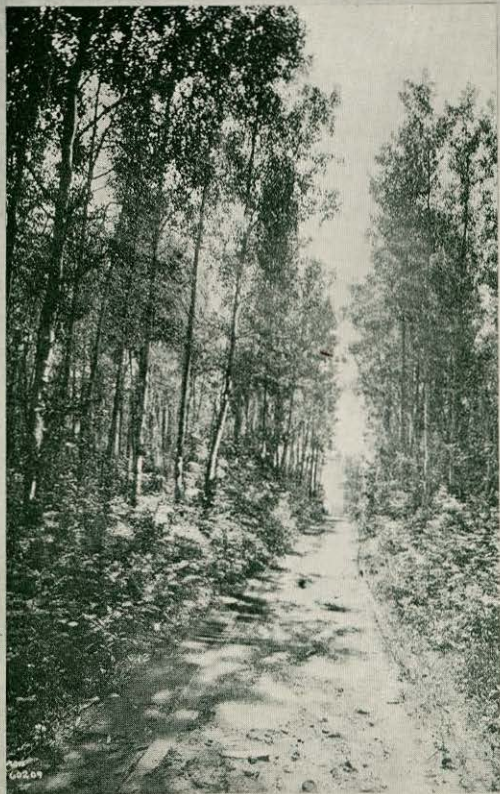
Canada Permanent Building

Post Office



Alberta College  
Court House

Provincial University



River Driveway

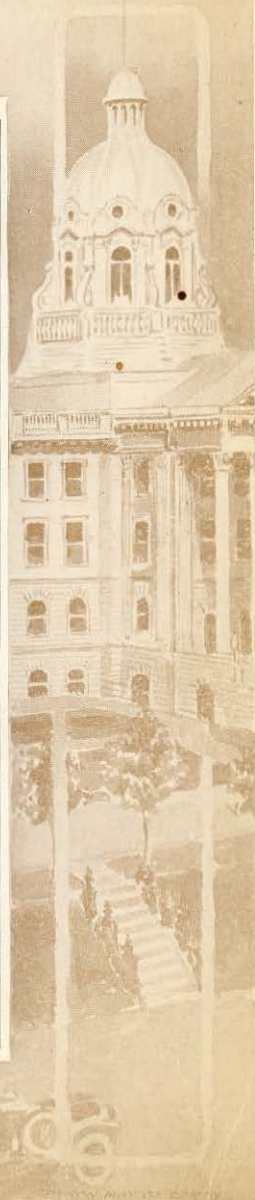


Along the River





In the Wholesale District





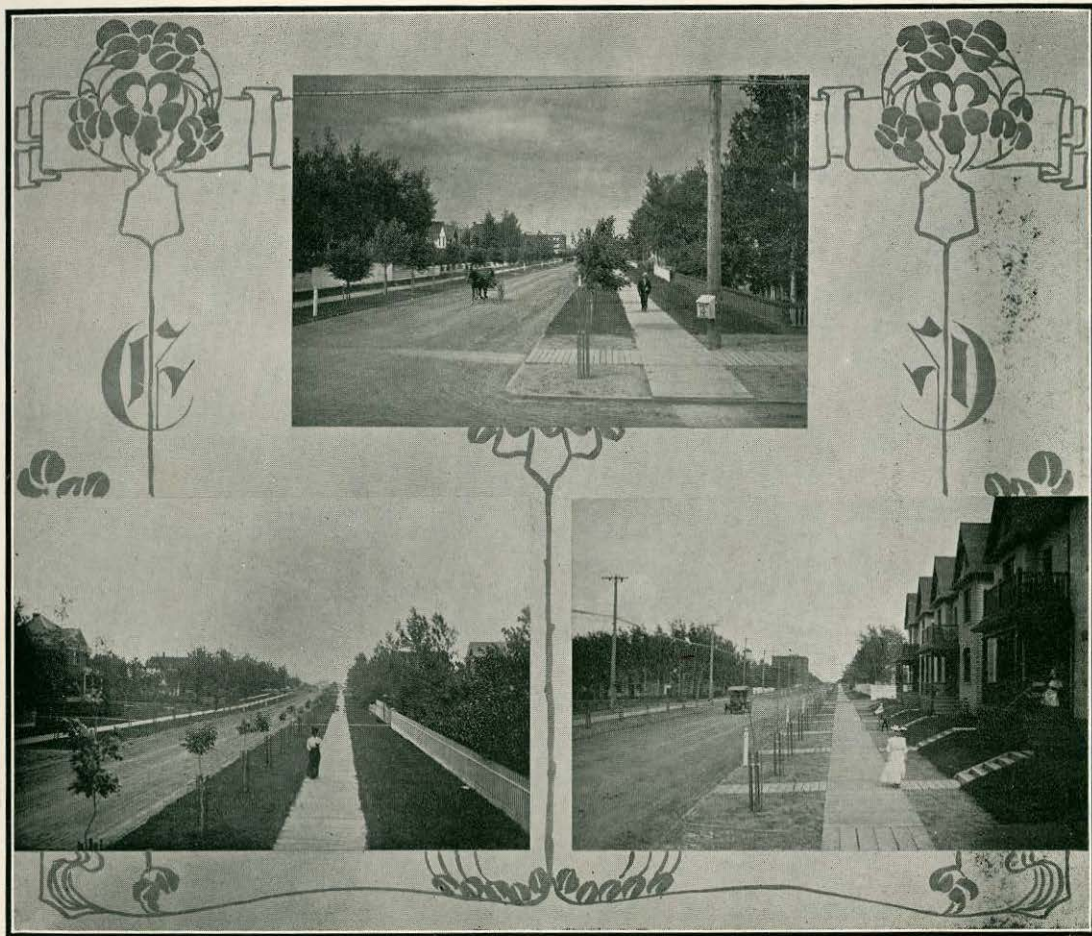
In the Wholesale District



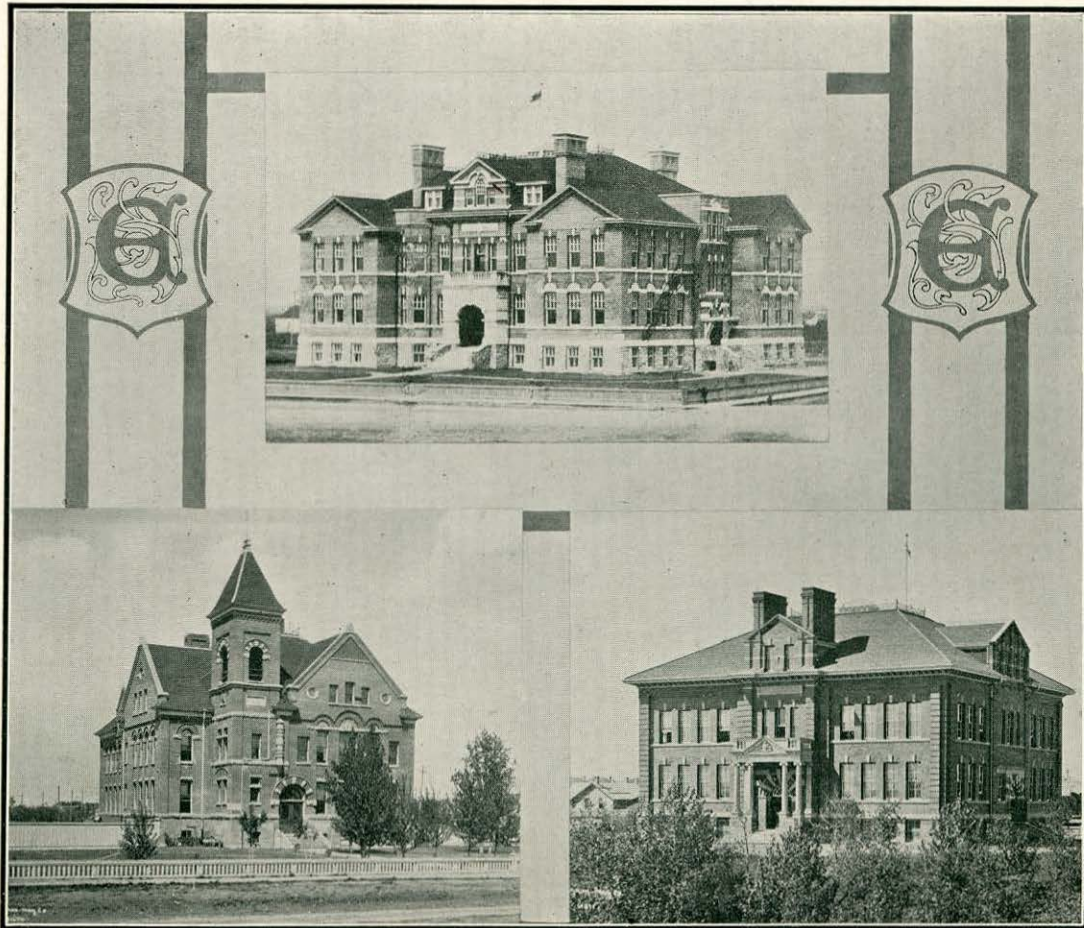
Edmonton Past and Present



Edmonton: A Railway Centre



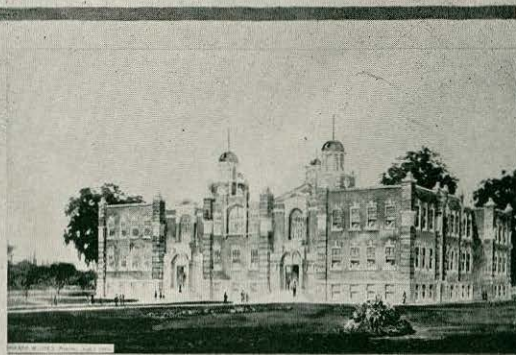
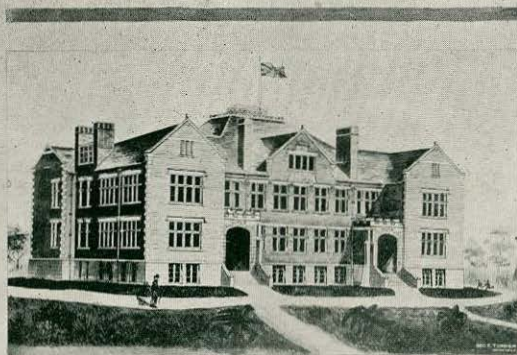
Typical Boulevards



Queen's Avenue School

Norwood School

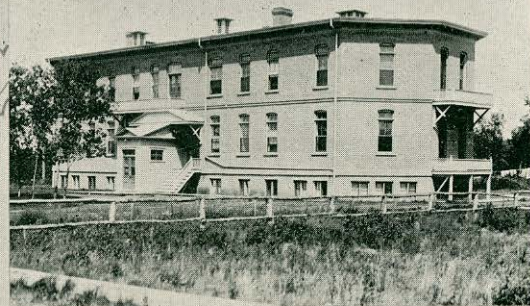
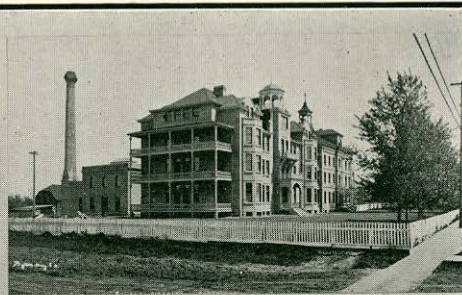
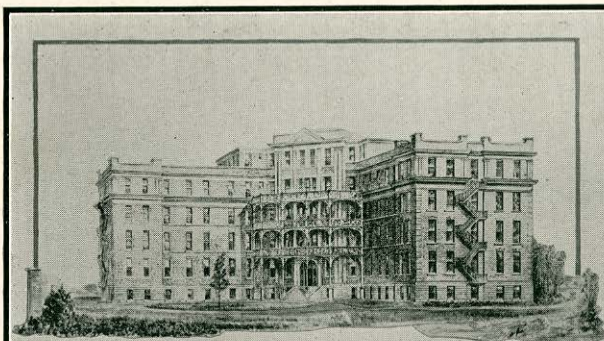
Alexander Taylor School



17th Street School  
MacKay Ave. School

High School  
R. C. Separate School





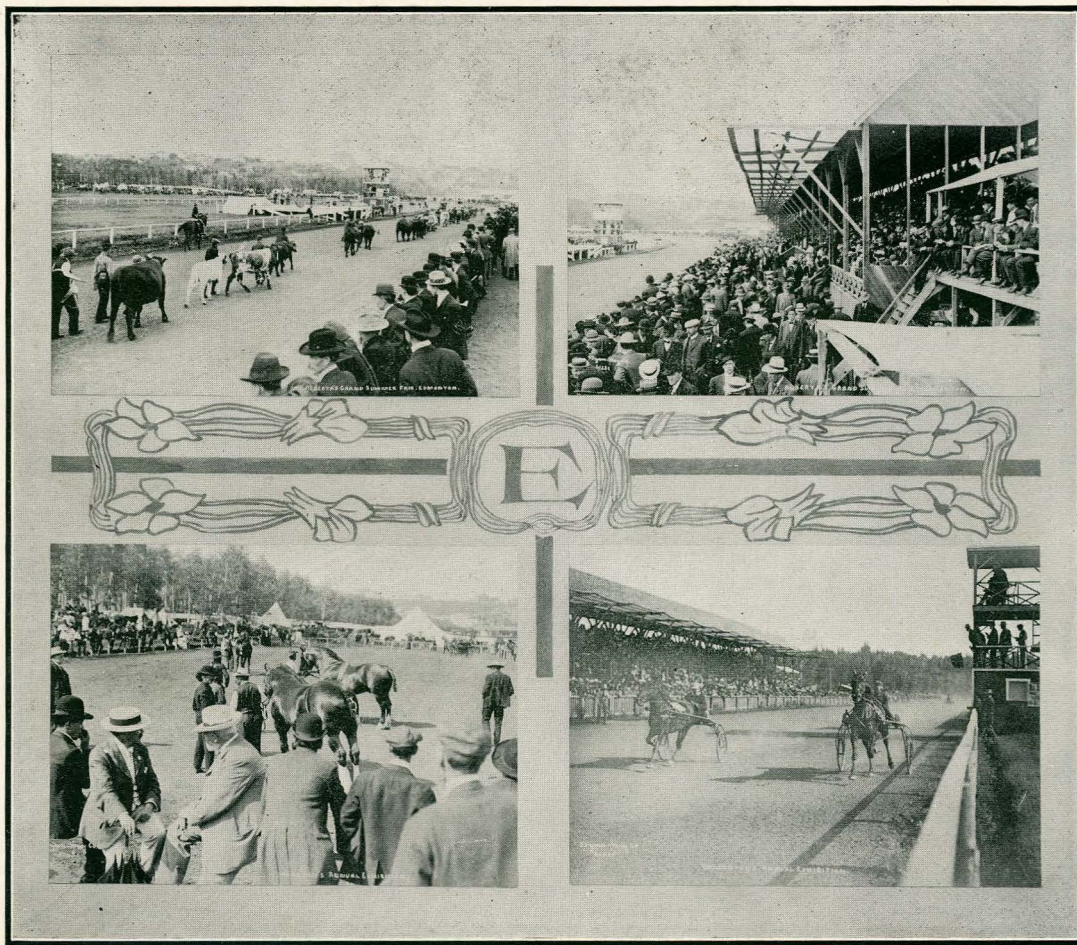
Edmonton's Hospitals



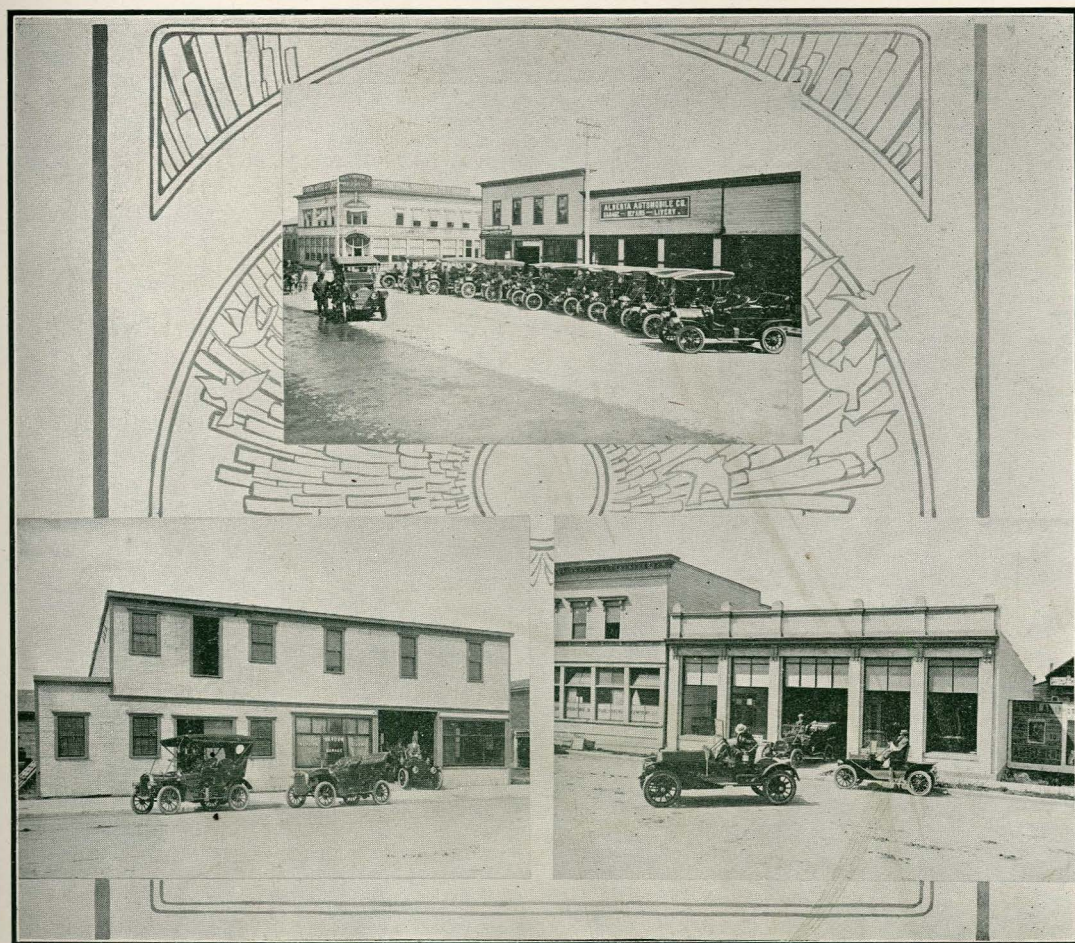
Rustic Views

River Scenes

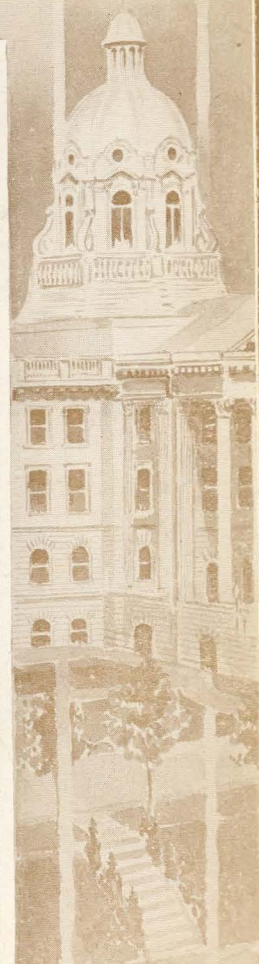




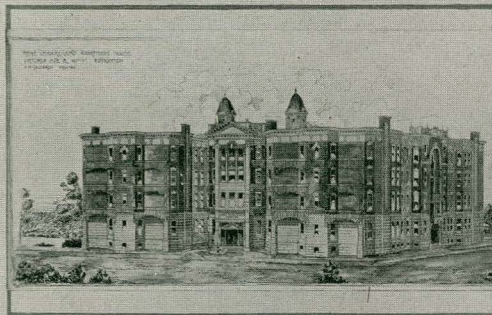
Scenes at Edmonton Industrial Exhibition



A few of Edmonton's Automobiles

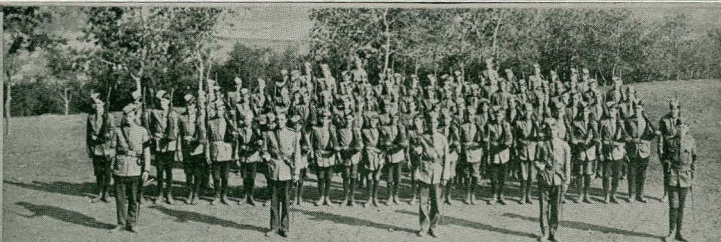


EDMONTON, MAY 20, 1907

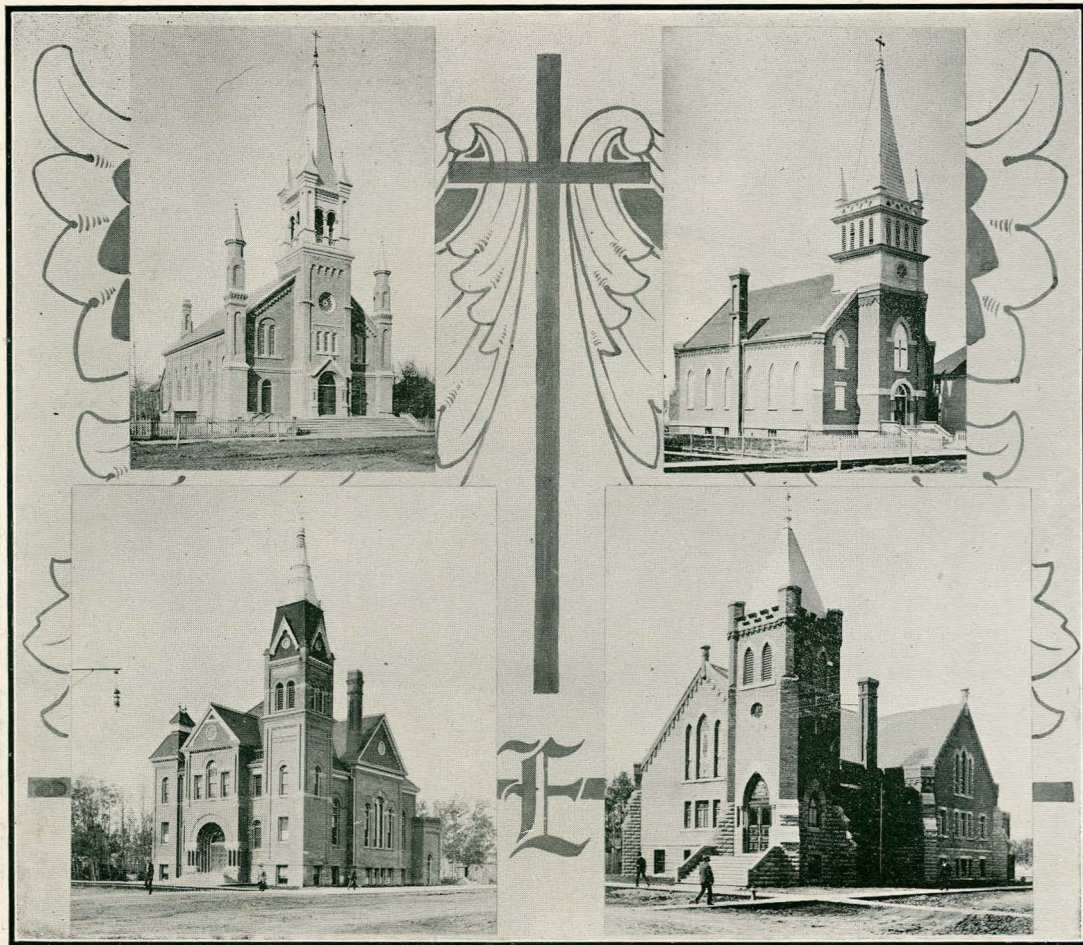


Lemarchand Mansion  
Arlington Apartments

MacLean Block  
Wize Block



Military Life in Edmonton



St. Joachim's Roman Catholic  
First Presbyterian

# CHURCHES

Immaculate Conception, Roman Catholic  
First Baptist

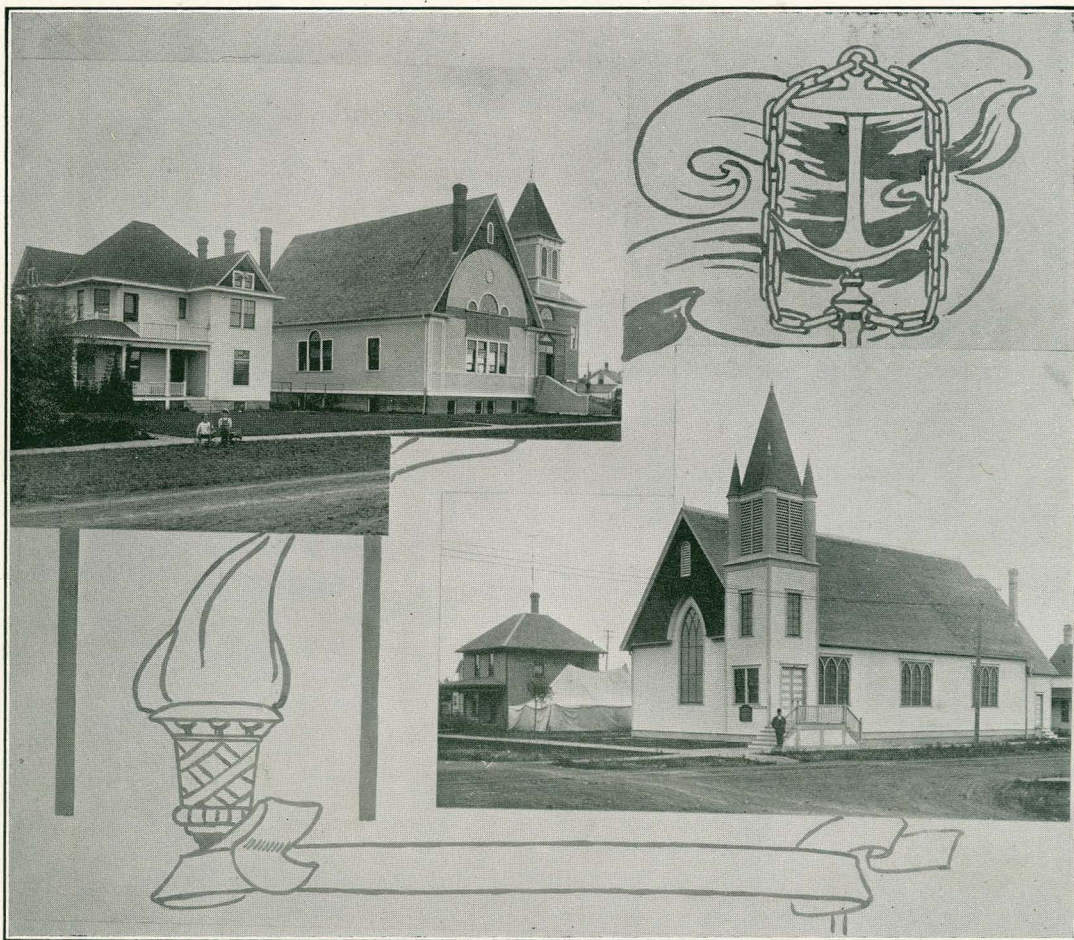


# CHURCHES

Robertson Presbyterian

McDougall Methodist

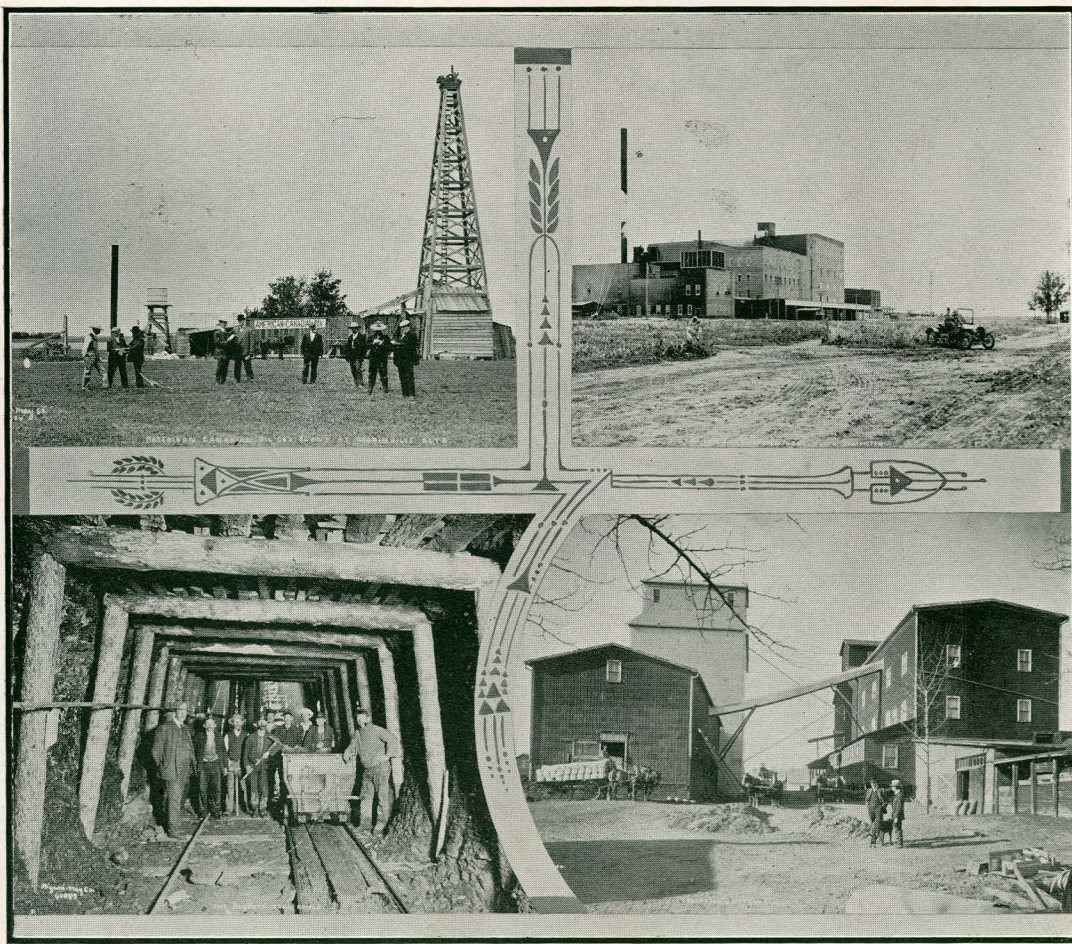
All Saints, Anglican



# CHURCHES

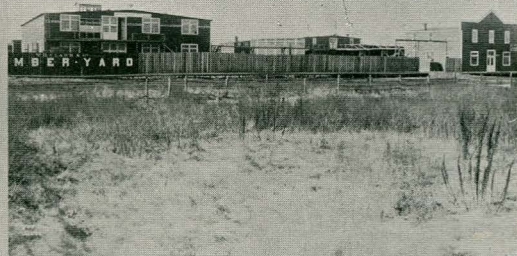
Westminster Presbyterian and Manse

Grace Methodist



American Canadian Oil Co. Ltd.  
A Coal Mine at Edmonton

J. Y. Griffin Co.'s Packing Plant  
Campbell and Ottewell's Flour Mill

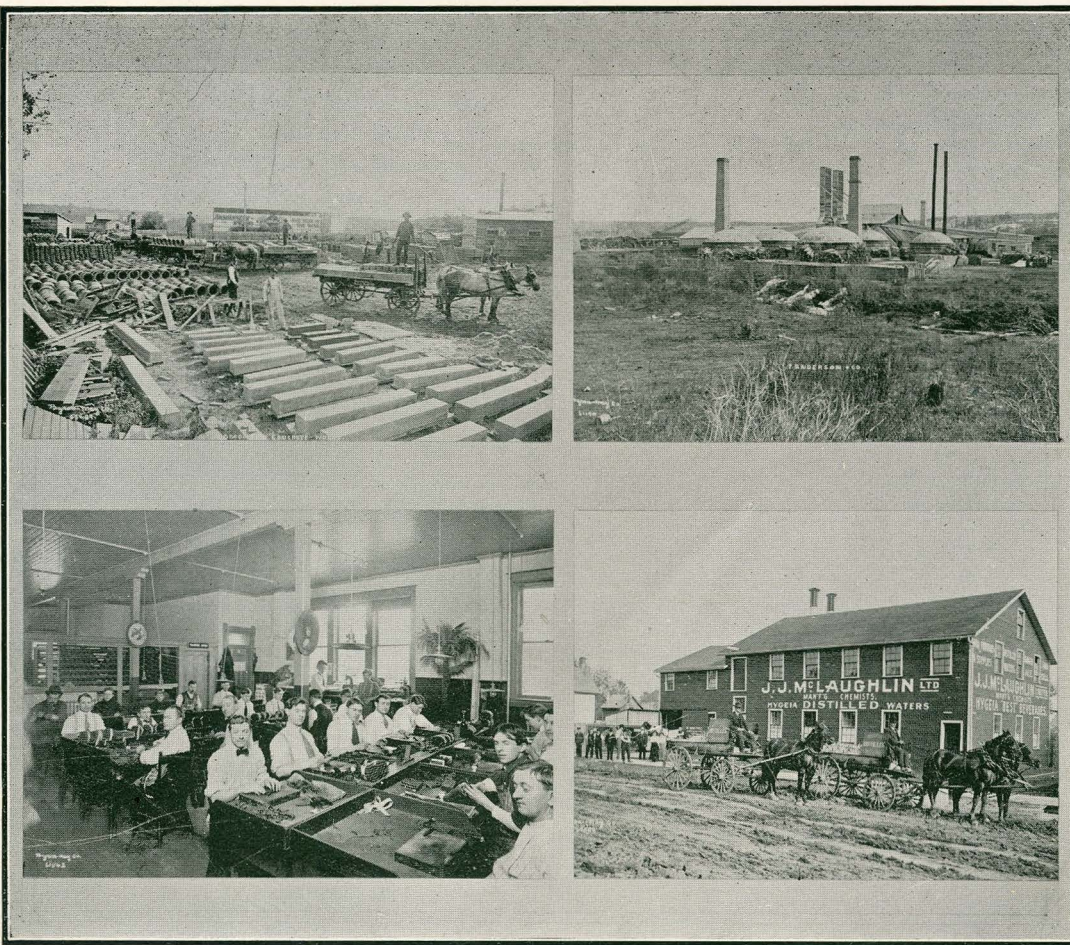


John Walter's Saw Mill

Cushing Bros., Ltd.  
(Factory)

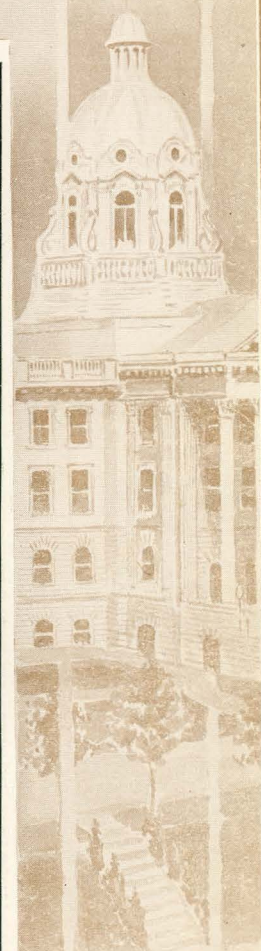
W. H. Clark & Co., Ltd.  
(Factory)

Edmonton Iron Works



Edmonton Concrete Co.  
Edmonton Cigar Factory (H. V. Shaw, Prop.)

P. Anderson's Brick Yard  
J. J. McLaughlin, Ltd.





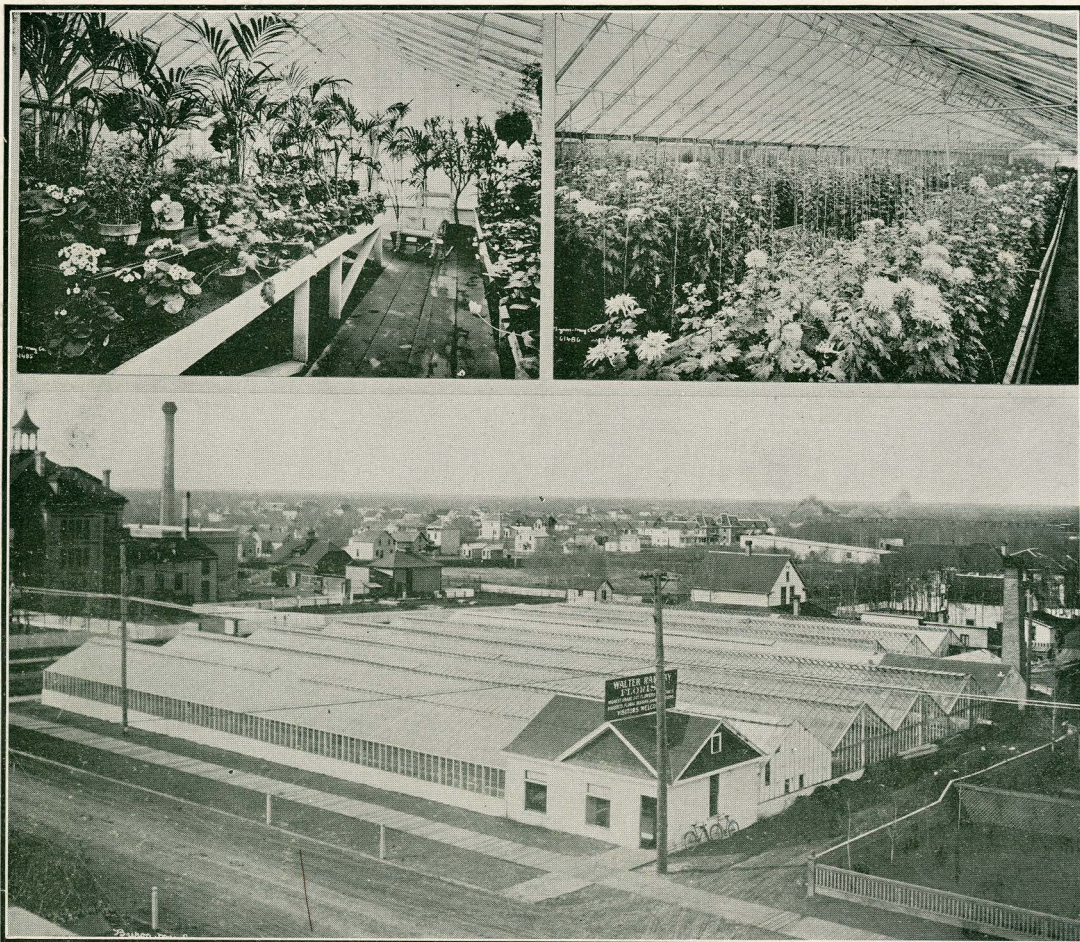
The Byron-May Co., Ltd.



King Edward  
Windsor

# HOTELS

Alberta  
Cecil



Ramsay's Green Houses, Edmonton



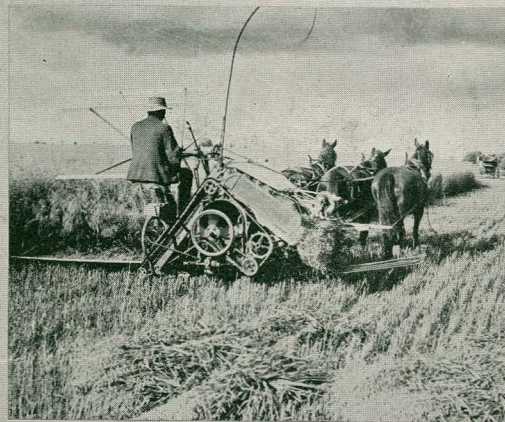
The Home of The Douglas Co., Ltd.



Panoramic Views



Panoramic Views

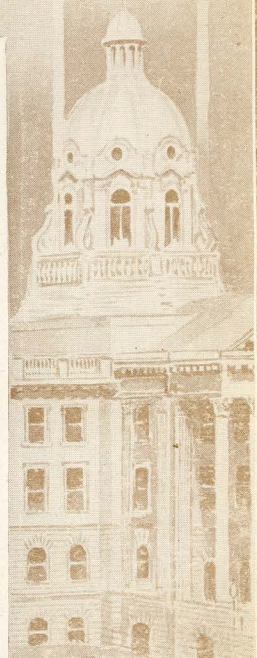


Farming Scenes



Windsor Block  
Mortlake Block

Acme Co., Ltd.  
Purvis Co. Ltd.





Blowey-Henry Co.  
Empire Block

Norwood Block  
Alberta and Jasper Blocks



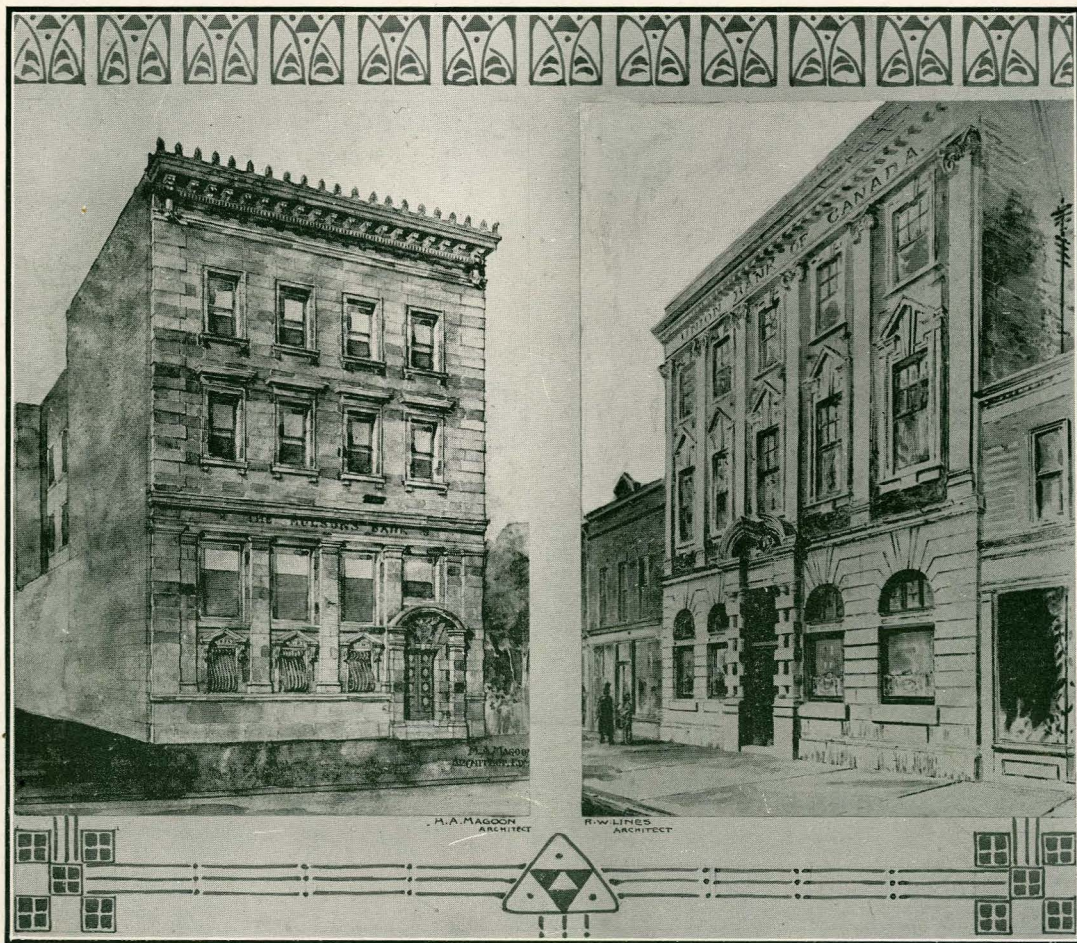
Interior of Imperial Bank



Commerce  
Montreal

BANKS

Imperial  
Merchants



BANKS

Molsons

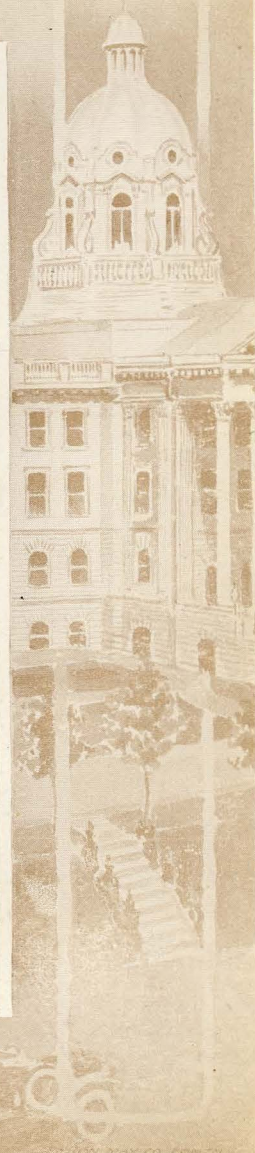
Union



T. M. Grindley, Esq.  
H. W. B. Douglas, Esq.

# RESIDENCES

Hon. A. L. Sifton, Premier of Alberta  
Government House

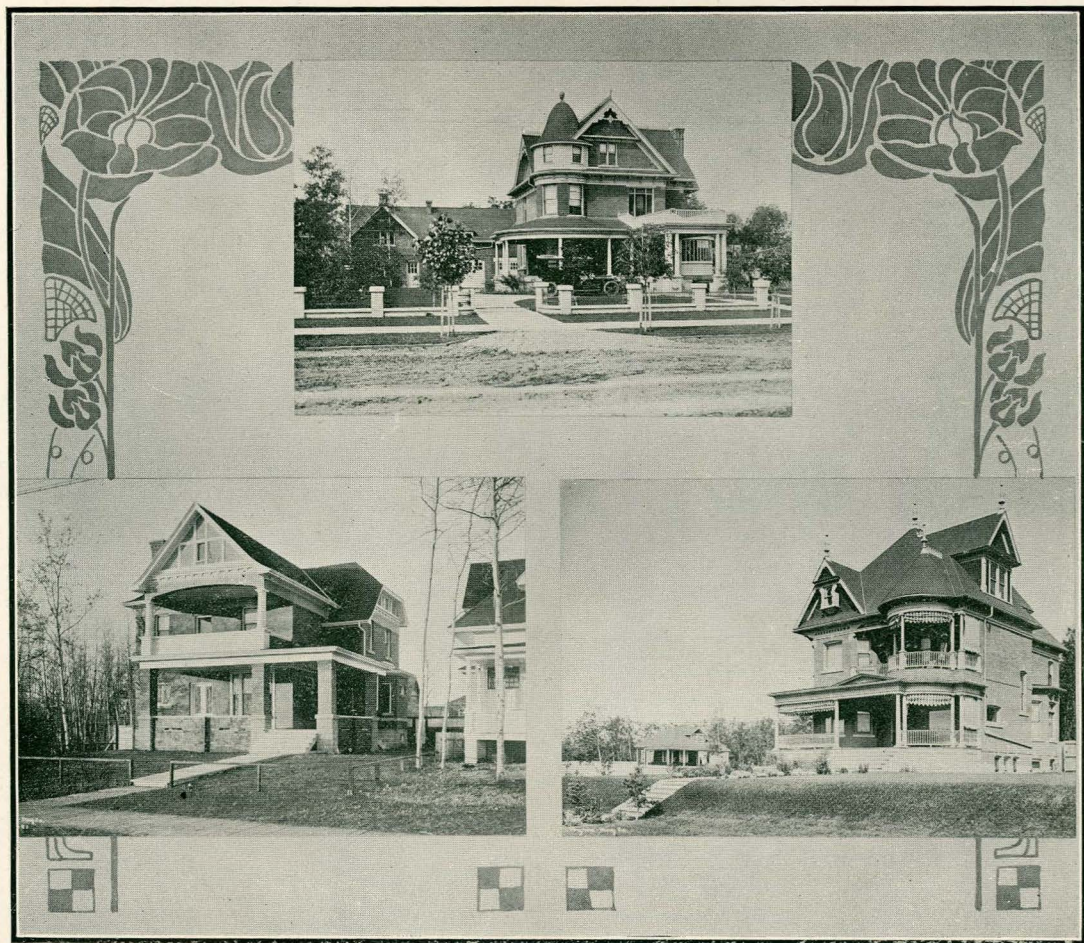




John A. McDougall, Esq.  
Dr. Braithwaite

# RESIDENCES

Richard Secord, Esq.  
Robert Lee, Esq.  
Mayor of City of Edmonton



# RESIDENCES

G. W. Swaisland, Esq.

Arch. York, Esq.

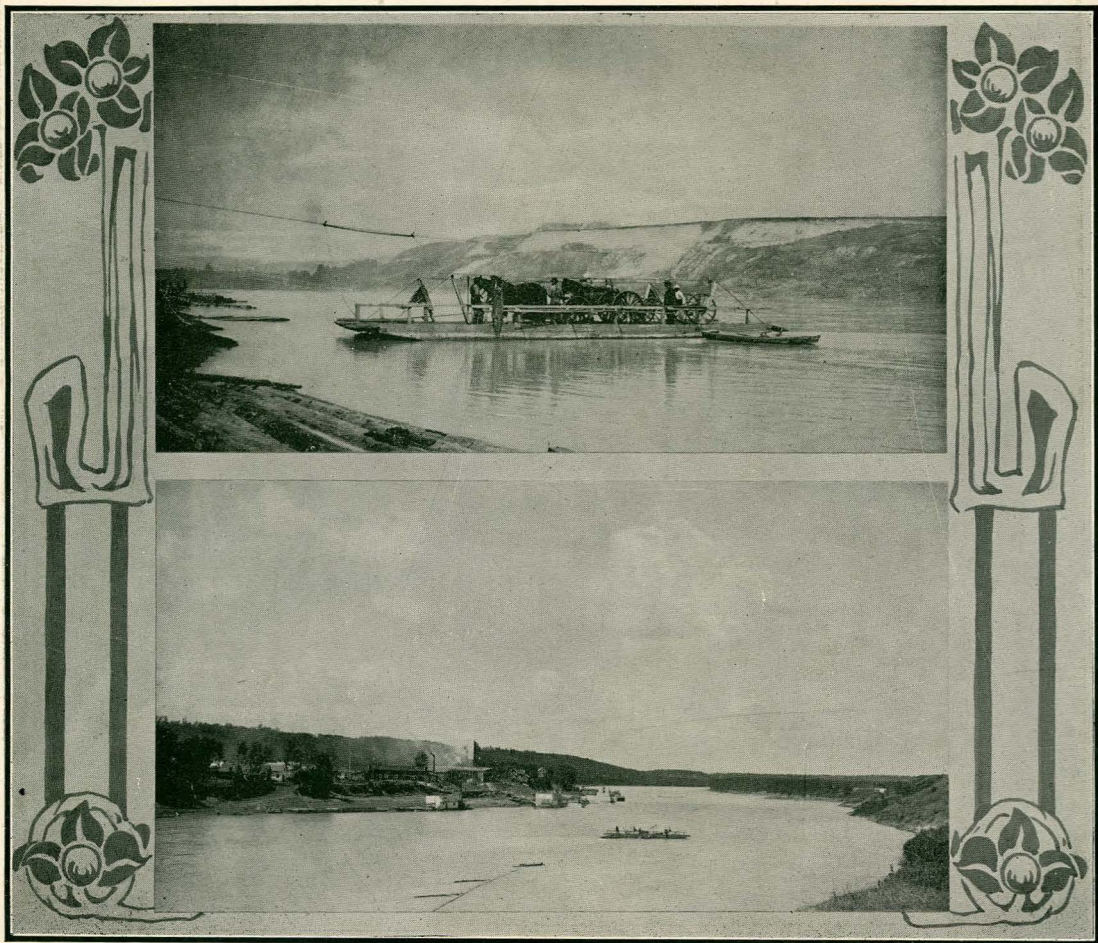
Hon. C. W. Cress



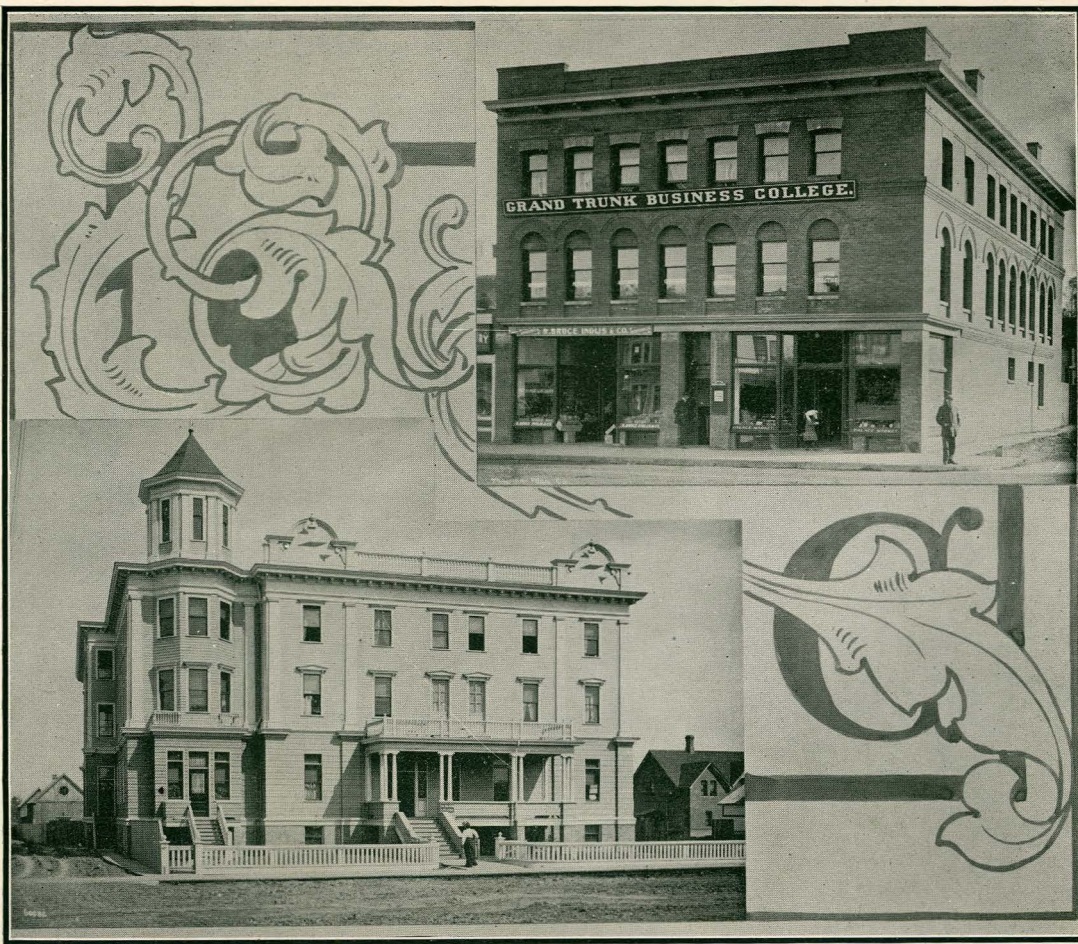
The City's Fire Department



The Edmonton Club

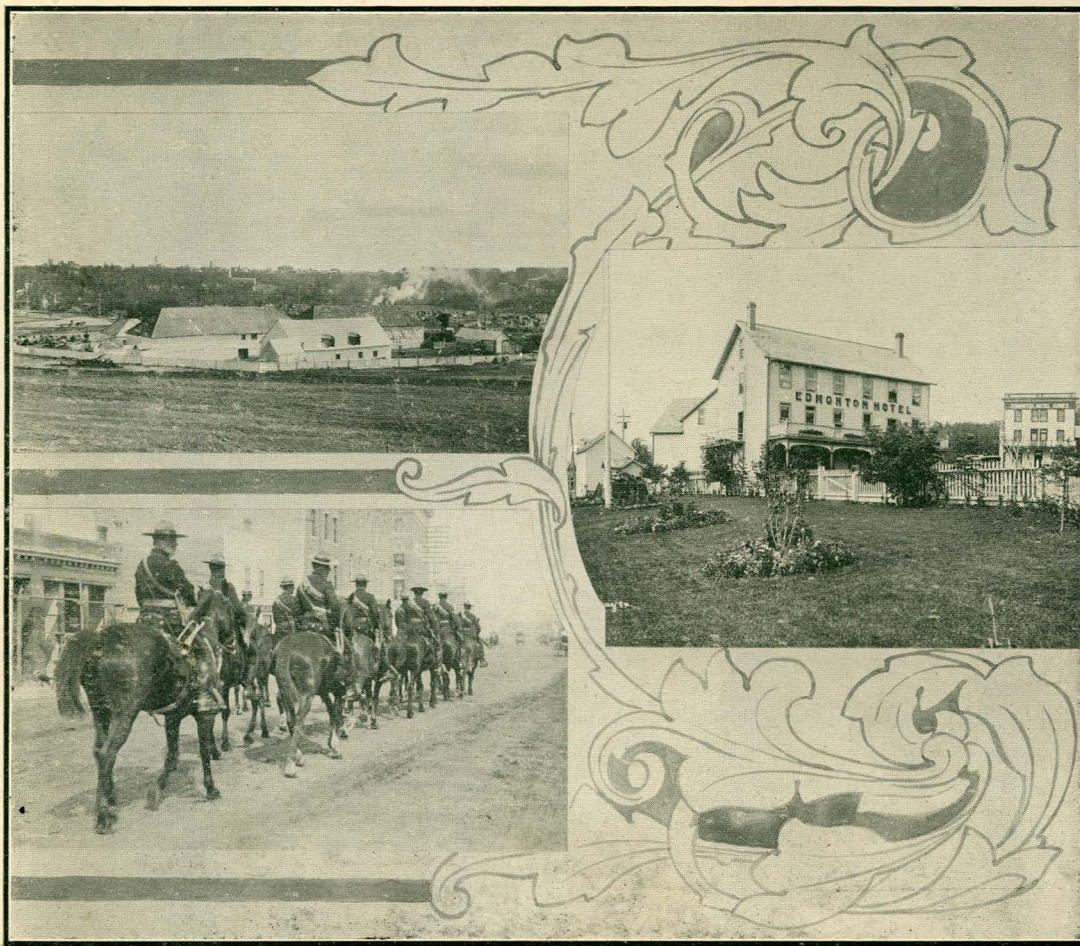


Scenes on the Saskatchewan at Edmonton



Alberta Business College

Grand Trunk Business College



The Old Hudson's Bay Fort  
Royal North West Mounted Police  
The Guardians of the Plains

# LINKS WITH THE PAST

The Edmonton Hotel  
The First Hotel Built West of Winnipeg